

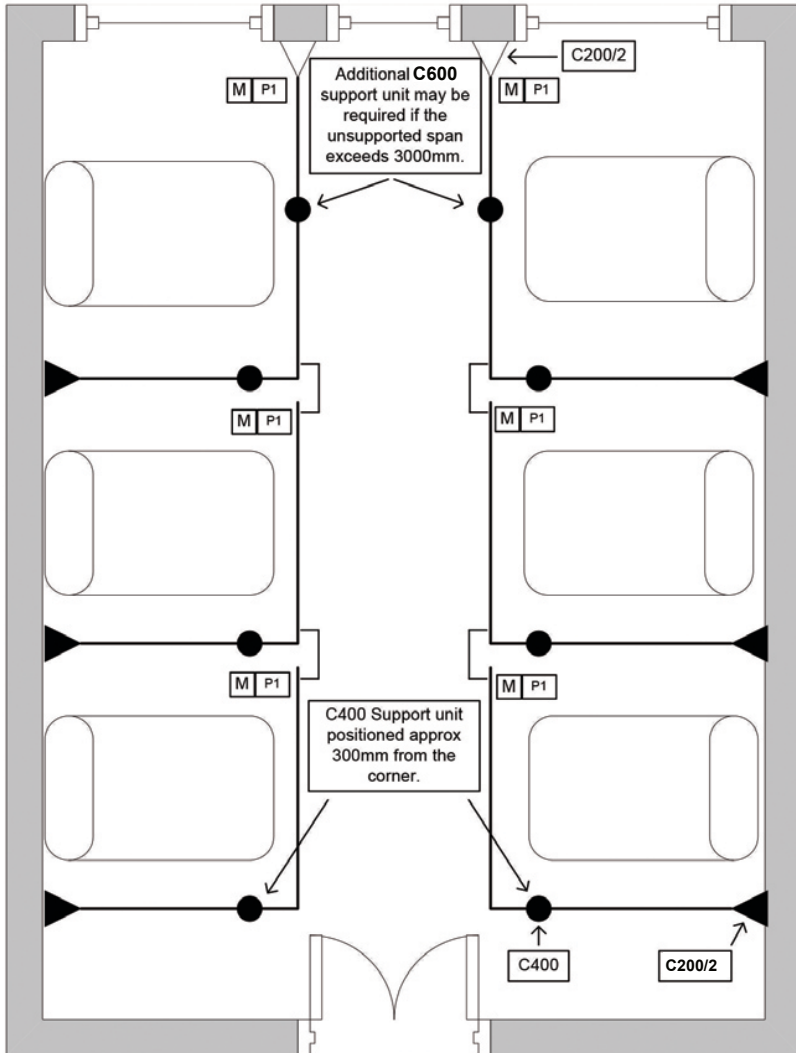
# Marbäst Ltd

The Leading Name in Privacy & Dignity

Marlux Disposable Curtains, Tracks, Blinds & Anti Ligature Fixings  
 www.marbast.uk sales@marbast.uk tel: 0800 559 3900

# Fast-Fit Cubicle Track Layout & Components

**Marlux®**  
 The world's Best Selling  
 Fast-Fit Disposable Curtains



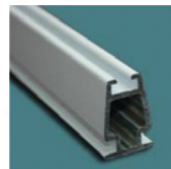
**C200/2**  
Adjustable Wall Bracket



**C20P**  
Vertical Hanger



**C100/8**  
Capping



**C100**  
Fast Fit cubicle Track



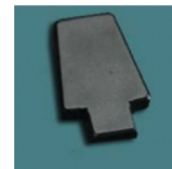
Allen key for C400 Grub Screws



**SW**  
Silicone Wipe



**C400**  
Vertical Support Unit



**C100/6M**  
Modified End Cap (M)



**FFCTPA**  
Plunger Assembly (P1)



**Nut & Bolt**  
for C200/2's



**C100/6**  
End Cap (E)



**C100/7**  
Front Link Plate

Please note that these instructions are a guide only and do not allow for all site conditions or cubicle track configurations. Please read through the whole document before commencing the installation

## MARLUX FAST-FIT CUBICLE TRACK - INSTRUCTIONS FOR USE



1

Lay curtain tracks on the floor, and check the walls for the position of the brackets.



2

Position C400 single bullet approx. 300mm from the radius into the captive nut in the track. Note additional nuts for C200/2 brackets and C100/T linking plates at this stage for attachment later.



3

Measure 2100mm from the floor to the C200/2 bottom fixing hole. Centralised the bracket vertically, mark and drill both holes. Affix bracket.



4

At the end designated as the 'Stacking' end push the track up into C200/2 bracket and secure with M6 screw provided.



5

At the opposite, loading end, using the M6 screw provided fix the track to the C200/2 wall bracket leaving the track 30mm from the wall.



6

Adjust the position of the bullet in the top of the track then with a plumb line mark the ceiling fixings then screw through and fix the C400 ceiling rose.



7

Measure length of C20P rod from ceiling hanger to approx 10mm past bottom grub screw.

### Marbäst Ltd

The Leading Name in Privacy & Dignity

Marlux Disposable Curtains, Tracks, Blinds & Anti Ligature Fixings  
www.marbast.uk sales@marbast.uk tel: 0800 559 3900

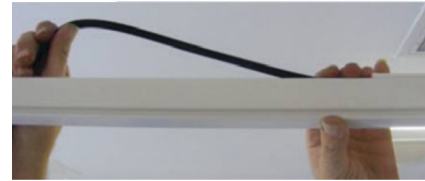
Marlux®  
The world's Best Selling  
Fast-Fit Disposable Curtains

## MARBAST® FAST-FIT CUBICLE TRACK - INSTRUCTIONS FOR USE



8

When Fixing for a suspended ceiling fit a 595mm x 595mm x 9mm timber pad above the ceiling tile and fit the C400 to the plywood pad through the ceiling tile.



11

Fit C100/8 capping to top Channel. Finish off by wiping the track with a clean cloth and silicone wipe the glide channels.



9

Position the two tracks together with the front link plate. The straight track should not butt up to the bend, it should be set back by approximately 40mm to allow the curtains to pass freely.



10

Check all bed bays line up and tighten all screws.



# Marbäst Ltd

The Leading Name in Privacy & Dignity

Marlux Disposable Curtains, Tracks, Blinds & Anti Ligature Fixings  
www.marbast.uk sales@marbast.uk tel: 0800 559 3900

**Marlux®**  
The world's Best Selling  
Fast-Fit Disposable Curtains