

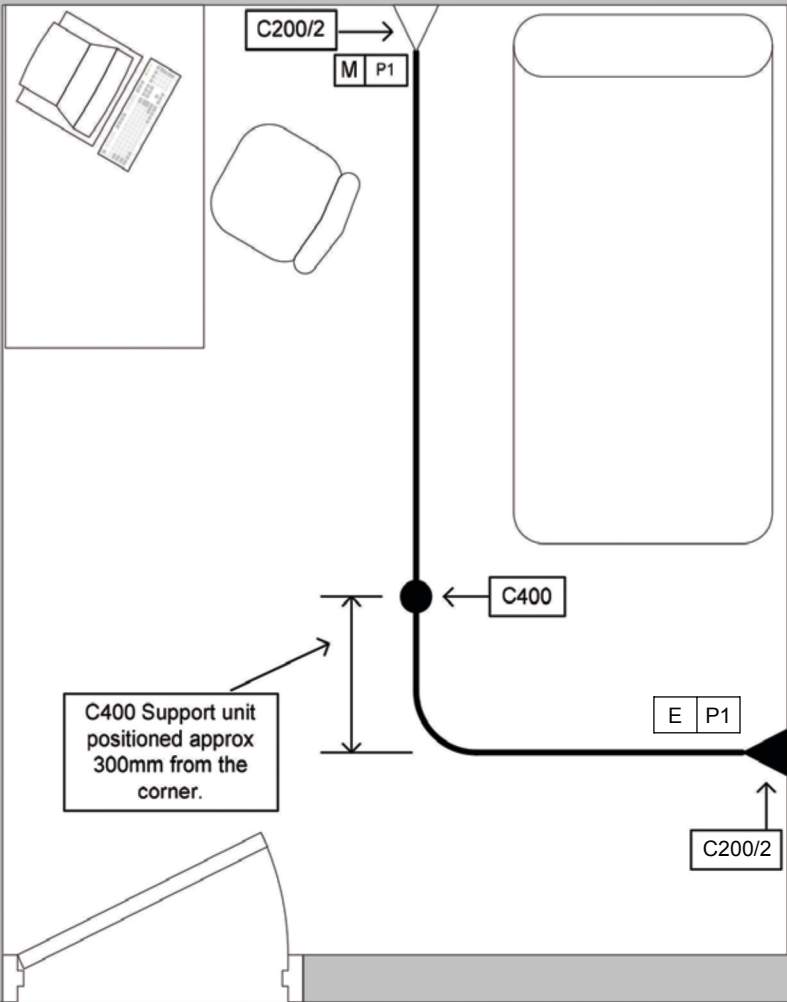
# Marbäst Ltd

The Leading Name in Privacy & Dignity

Marlux Disposable Curtains, Tracks, Blinds & Anti Ligature Fixings  
 www.marbast.uk sales@marbast.uk tel: 0800 559 3900

# Fast-Fit Cubicle Track Layout & Components

Marlux®  
 The world's Best Selling  
 Fast-Fit Disposable Curtains



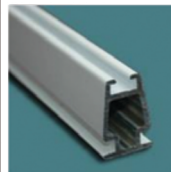
**C200/2**  
Adjustable Wall Bracket



**C20P**  
Vertical Hanger



**C100/8**  
Capping



**C100**  
Fast Fit cubicle Track



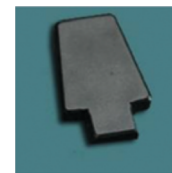
Allen key for C400 Grub Screws



**SW**  
Silicone Wipe



**C400**  
Vertical Support Unit



**C100/6M**  
Modified End Cap (M)



**FFCTPA**  
Plunger Assembly (P1)



**Nut & Bolt**  
for C200/2's



**C100/6**  
End Cap (E)



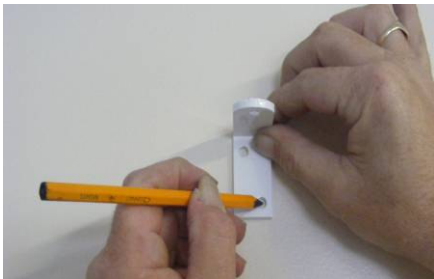
1

Lay curtain tracks on the floor, and check the walls for the position of the brackets.



2

Position C400 single bullet approx. 300mm from the radius into the captive nut in the track. Note additional nuts for C200/2 brackets and possible C100/T linking plates at this stage for attachment later.



3

Measure 2100mm from the floor to the C200/2 bottom fixing hole. Centralised the bracket vertically, mark and drill both holes. Affix bracket, and Repeat at other end.



4

At the end designated as the 'Stacking' end push the track up into C200/2 bracket and secure with M6 screw provided.



5

At the opposite, loading end, using the M6 screw provided fix the track to the C200/2 wall bracket leaving the track 30mm from the wall.



6

Adjust the position of the bullet in the top of the track then with a plumb line mark the ceiling fixings, drill & plug then screw through and fix the C400 ceiling rose.



7

When fixing to a suspended ceiling fit a 595mm x 595mm x 9mm timber pad above the ceiling tile and fit the C400 to the plywood pad through the Ceiling tile.

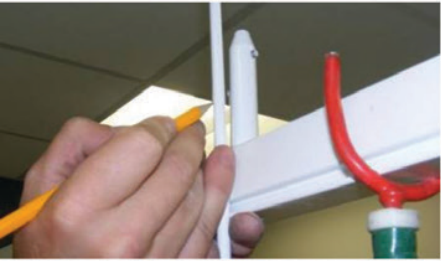
# Marbäst Ltd

The Leading Name in Privacy & Dignity

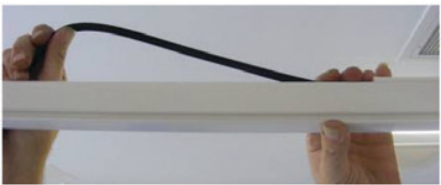
Marlux Disposable Curtains, Tracks, Blinds & Anti Ligature Fixings  
www.marbast.uk sales@marbast.uk tel: 0800 559 3900

**Marlux®**  
The world's Best Selling  
Fast-Fit Disposable Curtains

# MARBAST® FAST-FIT CUBICLE TRACK - INSTRUCTIONS FOR USE



**8** Measure the length of the C20P rod from the ceiling hanger to approx 10mm from the bottom grub screw and cut the rod to size. Insert rod and tighten the grub screws,



**9** Check that the track is level and tighten all screws. Then fit the C100/8 capping. Finish off by wiping the track with a clean cloth and silicone wipe the glide channels.



## Also Available - Marlux Disposable Curtains



**a** Fast-Fit curtains have pre-fitted Fast-Fit hooks to enable rapid and efficient change-over of curtains; reducing labour costs and limiting disruption to ward areas.

**Marbäst Ltd**

The Leading Name in Privacy & Dignity  
Marlux Disposable Curtains, Tracks, Blinds & Anti Ligature Fixings  
www.marbast.uk sales@marbast.uk tel: 0800 559 3900

**Marlux®**  
The world's Best Selling  
Fast-Fit Disposable Curtains